



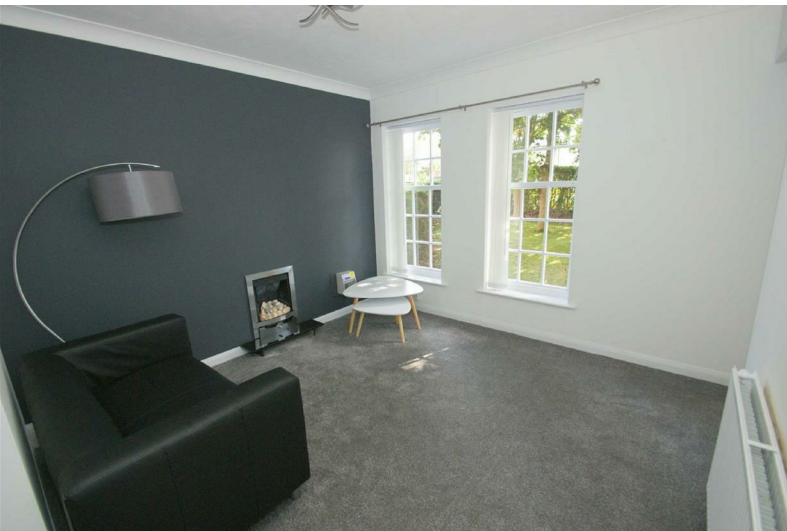
Stoneacre  
Properties



## Hallgate Court

Alwoodley Leeds, LS17 7HN

£125,000



# Hallgate Court

Alwoodley Leeds, LS17 7HN

£125,000



## LIVING ROOM

A delightful reception room with a window overlooking the front of the property, radiator, open plan to kitchen and dining area.

## DINING AREA

Open plan to the reception room and kitchen.

## OPEN PLAN KITCHEN

Range of luxury fitted wall and base units with tiled splash back, stainless steel sink unit, plumbed for washing machine, built in oven and electric hob with extractor hood over, space for under counter fridge, low voltage inset spotlights, window.

## BEDROOM ONE

Double bedroom laid to carpet complete with fitted wardrobes.

## BEDROOM TWO

Bedroom laid to carpet with built-in cupboard.

## BATHROOM

3-piece bathroom comprising shower, WC, pedestal hand wash basin and heated towel rail.

## EXTERNAL

Hallgate Court can be found on Nursery Lane which is located just off Harrogate Road. It is within easy reach of both the city centre and motorway networks.

## LEASE

We are advised by the vendor that the property is leasehold with approximately 56 years remaining. The current service charge is approximately £1320 per annum, ground rent TBC. A buyer is advised to obtain verification from their solicitor or legal advisor.



## Road Map



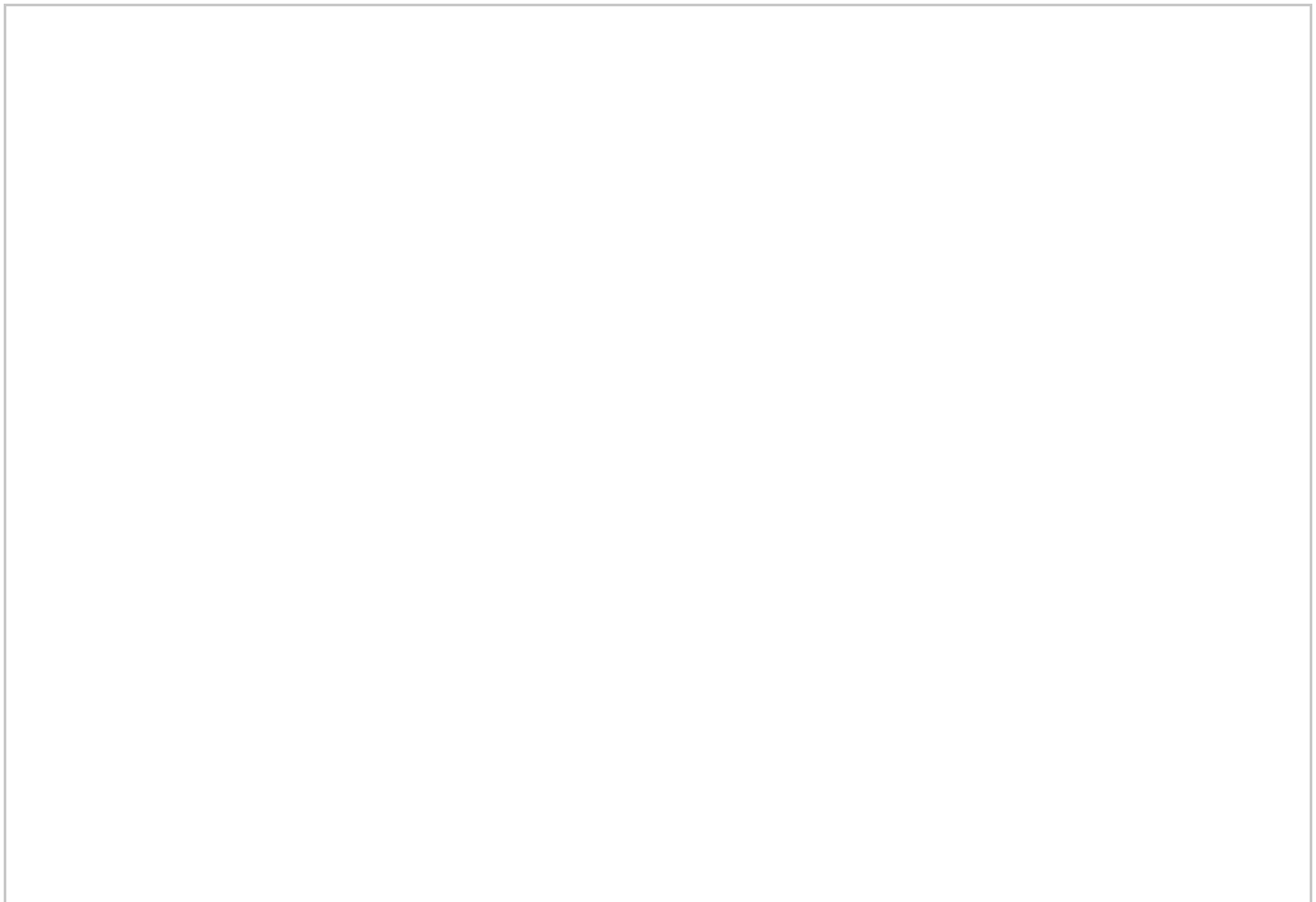
## Hybrid Map



## Terrain Map



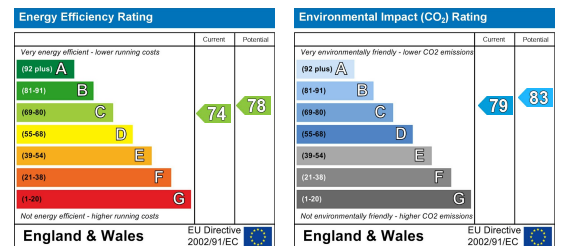
## Floor Plan



## Viewing

Please contact our Chapel Allerton Sales Office on 0113 237 0999 if you wish to arrange a viewing appointment for this property or require further information.

## Energy Efficiency Graph



These particulars, whilst believed to be accurate are set out as a general outline only for guidance and do not constitute any part of an offer or contract. Intending purchasers should not rely on them as statements of representation of fact, but must satisfy themselves by inspection or otherwise as to their accuracy. No person in this firm's employment has the authority to make or give any representation or warranty in respect of the property.